

**2 Way Soft Close Brass Solenoid Valve  
Normally Closed and Normally Open  
G 1/4" – G 2"**

**SERIES  
B35 B36**

**AIR and FLUID CONTROL**

**General Description**

2/2 way normally closed/normally open – servo assisted.  
Soft close function, brass solenoid valve.

Typical applications include water, air, mechanical services, irrigation and general industry.

**Technical Details**

Function: Normally Closed & Normally Open  
Valve Design: Servo Assisted, Anti Water Hammer  
Body: Brass  
Seat: NBR  
Operator: Stainless Steel  
Duty Cycle: Continuous operation 100% ED  
Media: Non aggressive media up to 40 CST  
Viscosity (e.g. Air & Water)  
Installation: As required, preferably upright.  
Life Expectancy: Hundreds of thousands of cycles.  
Options: B35 available with Manual Override.



**Normally Closed (Energize to Open)**

Model	Function	Port Size (BSP)	Orifice (mm)	CV	Media Pressure (BAR)	Media Temperature	Weight (Kg)	Rebuild Kit #
B35-2-10-*N	N.C.	1/4	10	2.3	0.3 - 10	-10°C - 80°C	0.5	RK-B35-4N
B35-3-10-*N	N.C.	3/8	10	2.3	0.3 - 10		0.5	
B35-4-10-*N	N.C.	1/2	10	3	0.3 - 10		0.5	
B35-4-14-*N	N.C.	1/2	14	5	0.3 - 10		0.6	RK-B35-414N
B35-5-14-*N	N.C.	3/4	14	5	0.3 - 10		0.65	
B35-5-20-*N	N.C.	3/4	20	10	0.3 - 16		1.35	RK-B35-6N
B35-6-20-*N	N.C.	1	20	11	0.3 - 16		1.2	
B35-7-40-*N	N.C.	1 1/4	40	28	0.7 - 16		2.45	RK-B35-8N
B35-8-40-*N	N.C.	1 1/2	40	34	0.7 - 16		2.45	
B35-9-50-*N	N.C.	2	50	50	0.7 - 16		3.8	RK-B35-9N

**Normally Open (Energize to Close)**

Model	Function	Port Size (BSP)	Orifice (mm)	CV	Media Pressure (BAR)	Media Temperature	Weight (Kg)	Rebuild Kit #
B36-2-14-*N	N.O.	1/4	14	3	0.3 - 10	-10°C - 80°C	0.6	RK-B36-4N
B36-3-14-*N	N.O.	3/8	14	4	0.3 - 10		0.6	
B36-4-14-*N	N.O.	1/2	14	5	0.3 - 10		0.6	
B36-5-20-*N	N.O.	3/4	20	10	0.3 - 16		0.8	RK-B36-6N
B36-6-20-*N	N.O.	1	20	14	0.3 - 16		1.1	
B36-7-40-*N	N.O.	1 1/4	40	28	0.7 - 16		2.6	RK-B36-8N
B36-8-40-*N	N.O.	1 1/2	40	34	0.7 - 16		2.6	
B36-9-50-*N	N.O.	2	50	50	0.7 - 16		3.75	RK-B36-9N

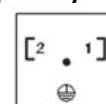
\*Voltage code: 1 – 240vAC, 2 – 110vAC, 5 – 24vAC, 7 – 12vDC, 8 – 24vDC, 11 – 415vAC

**Electrical Data**

Construction: Encapsulated Coil c/w LED connector plug  
Plug Connection: DIN 43650A. 2 pin + Earth plug with PG11 cable connector.  
Voltage Tolerance: +10% to -10%  
Coil Insulation: Class F  
Protection: IP65

**Connector Plug (with LED)**

**1 & 2 input terminals  
(Non polarity conscious)**



Earth Terminal

**GENERAL PURPOSE BRASS SOLENOID VALVE  
NORMALLY CLOSED / NORMALLY OPEN**

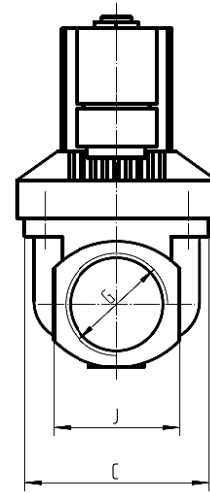
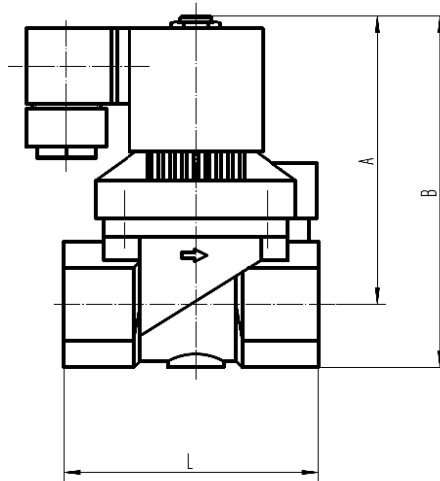
**SERIES  
B35/B36**

**Dimensions**

**Normally Closed**

Model	G	L	A	B	C
B35-2-10	¼	50	70	85	38
B35-3-10	3/8	50	70	85	38
B35-4-10	½	50	70	85	38
B35-4-14	½	64	75	90	45
B35-5-14	¾	64	78	95	45
B35-5-20	¾	82	95	115	65
B35-6-20	1	82	95	115	65
B35-7-40	1 ¼	133	105	135	92
B35-8-40	1 ½	133	105	135	92
B35-9-50	2	160	115	150	108

¼" – 1"



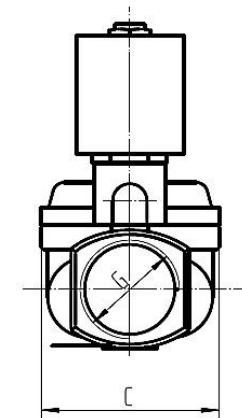
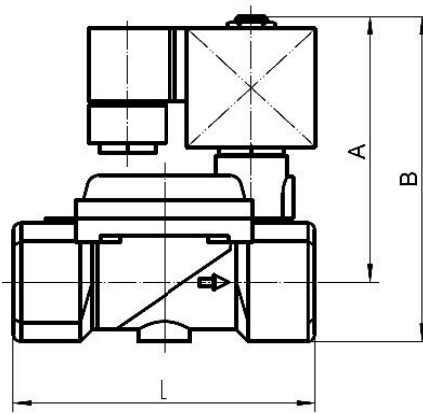
Quality  
ISO 9001  
SAI GLOBAL  
**JAS-ANZ**



**Normally Open**

Model	G	L	A	B	C
B36-2-14	¼	64	95	110	40
B36-3-14	3/8	64	95	110	40
B36-4-14	½	64	95	110	40
B36-5-20	¾	82	108	130	65
B36-6-20	1	82	108	130	65
B36-7-40	1 ¼	135	110	139	92
B36-8-40	1 ½	135	110	139	92
B36-9-50	2	160	120	155	108

1 ¼" – 2"



**Coil Specifications**

**B35 Normally closed ¼" – 2"**

Voltage	Current		Voltage Code *
	Inrush	Holding	
12v DC	1.38A	1.03A	7
24v DC	0.6A	0.47A	8
24v AC	0.79A	0.761A	5
110v AC	0.112A	0.109A	2
240v AC	0.066A	0.062A	1

Coil Part Number: SC-N12-\*

**B36 Normally open ¼" – 1"**

Voltage	Current		Voltage Code *
	Inrush	Holding	
12v DC	1.84A	1.3A	7
24v DC	0.72A	0.52A	8
24v AC	0.803A	0.772A	5
110v AC	0.217A	0.204A	2
240v AC	0.106A	0.099A	1

Coil Part Number: SC-N13-\*

**B36 Normally open 1 ¼" – 2"**

Voltage	Current		Voltage Code *
	Inrush	Holding	
12v DC	1.84A	1.3A	7
24v DC	0.72A	0.52A	8
24v AC	0.803A	0.772A	5
110v AC	0.217A	0.204A	2
240v AC	0.106A	0.099A	1

Coil Part Number: SC-N14-\*

**WARNING**

These products are intended for use in industrial applications only. Do not use these products where pressures and temperatures can exceed those listed under 'Technical Data' and in our individual 'Series' data sheets. Before using these products with fluids other than those specified, for non-industrial applications, life-support systems, or other applications not within published specifications, consult Process Systems Pty Ltd. Through misuse, age, or malfunction, components used in industrial valve applications can fail in various modes. The system designer is warned to consider the failure modes of all component parts used in industrial valve applications and to provide adequate safeguards to prevent personal injury or damage to equipment in the event of such failure. System designers must provide a warning to the user in the system instructional manual if protection against a failure mode cannot be adequately provided. System designers and end users are cautioned to review specific warnings or specifications found in instruction sheets or labels packed or attached and shipped with the products. Our policy is one of continuous research and development. We therefore reserve the right to amend without notice the specifications given in this document or our individual 'Series' data sheets.