

MANIFOLDS

316 STAINLESS STEEL



MINNOX



WATERMARK APPROVED 316SS MANIFOLDS

FUNCTION AND FEATURES

- | | |
|---|---|
| <ul style="list-style-type: none">■ Wide range of applications
Suitable for pumps, water meters, PRVs, heating circuits and much more. | <ul style="list-style-type: none">■ Robust Construction
Formed from heavy duty Sch10S 316 stainless steel pipe and fittings. |
| <ul style="list-style-type: none">■ Watermark Approved
Approved to AS3688 for use in potable water supply systems. | <ul style="list-style-type: none">■ Electropolished
Polished stainless steel improves the surface finish and corrosion resistance. |
| <ul style="list-style-type: none">■ Consistent installations
Factory fabricated for neat and consistent installations every time. | <ul style="list-style-type: none">■ Custom Configurations
Other sizes and configurations available upon request. |

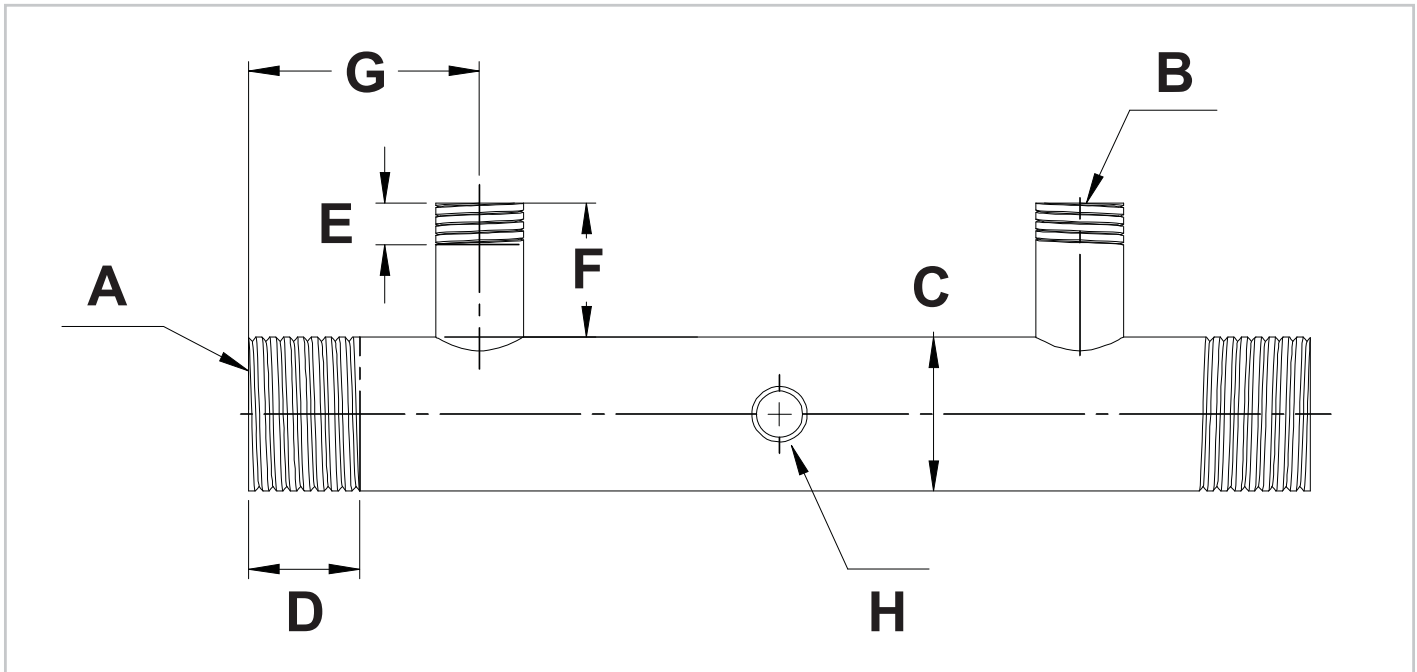
PRODUCT SPECIFICATIONS

The 316SS manifolds are Watermark approved to AS3688 as a threaded end connector and are suitable for a wide range of water supply applications. These are fabricated from heavy duty Schedule 10S 316 stainless steel pipe and electropolished to provide a neat, consistent and professional installation.

Please note that due to the large range of configurations available, most models are not stocked as standard and are only available upon request. Please contact All Valve Industries to discuss your requirements.

PART	SPECIFICATION
MATERIAL	SS 316
PRESSURE	2,500kPa
TEMPERATURE	95°C
THREADS	BSP (ISO7.1)

DIAGRAM



CODE	A (HEADER) (ISO7.1 BSP)	B (BRANCH) (ISO7.1 BSP)	C	D	E	F	G	B (ISO7.1 BSP)	BRANCH OUTLETS
MM-25/15M	25mm	15mm	34 x 2.77mm	18	12	35	70	1/4" F (typ)	2 - 10 Outlets
MM-25/20M	25mm	20mm	34 x 2.77mm	18	13	35	70	1/4" F (typ)	2 - 10 Outlets
MM-32/15M	32mm	15mm	42 x 2.77mm	20	12	35	70	1/4" F (typ)	2 - 10 Outlets
MM-32/20M	32mm	20mm	42 x 2.77mm	20	13	35	70	1/4" F (typ)	2 - 10 Outlets
MM-32/25M	32mm	25mm	42 x 2.77mm	20	18	45	70	1/4" F (typ)	2 - 10 Outlets
MM-40/15M	40mm	15mm	48 x 2.77mm	20	12	35	70	1/4" F (typ)	2 - 10 Outlets
MM-40/20M	40mm	20mm	48 x 2.77mm	20	13	35	70	1/4" F (typ)	2 - 10 Outlets
MM-40/25M	40mm	25mm	48 x 2.77mm	20	18	45	70	1/4" F (typ)	2 - 10 Outlets
MM-40/32M	40mm	32mm	48 x 2.77mm	20	20	45	70	1/4" F (typ)	2 - 10 Outlets
MM-50/15M	50mm	15mm	60 x 2.77mm	25	12	35	70	1/4" F (typ)	2 - 10 Outlets
MM-50/20M	50mm	20mm	60 x 2.77mm	25	13	35	70	1/4" F (typ)	2 - 10 Outlets
MM-50/25M	50mm	25mm	60 x 2.77mm	25	18	45	70	1/4" F (typ)	2 - 10 Outlets
MM-50/32M	50mm	32mm	60 x 2.77mm	25	20	45	70	1/4" F (typ)	2 - 10 Outlets

Please note that values provided are typical only and may vary slightly between the models. For exact dimensions, please contact All Valve Industries for specific product drawings.



220823-00

WE RESERVE THE RIGHT TO CHANGE OUR PRODUCTS AND THEIR RELEVANT TECHNICAL DATA, CONTAINED IN THIS PUBLICATION, AT ANY TIME AND WITHOUT PRIOR NOTICE.

All Valve industries Pty Ltd. · Unit 2, 18-28 Sir Joseph Banks Drive Kurnell NSW 2231 - Ph: +61 2 8543 9811 · Fax: +61 2 8543 9822
www.allvalve.com.au · info@allvalve.com.au · © Copyright 2023