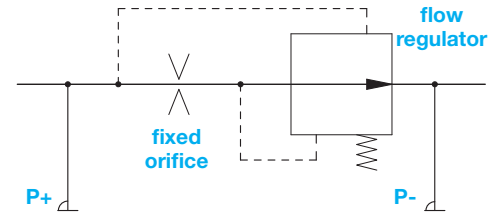


# cim790



## Cartridge Selection List

- Before installation check that cartridge flow rate is properly matching the project requirements;
- Valves may be installed either on horizontal or vertical pipelines;
- At valve inlet and outlet no minimum straight-piping is required.



Cartridges are available in two pressure classes:

- Low pressure up to 350Kpa in "CR" brass (f.i. Cim CA1210);
- High pressure up to 600Kpa in nickel plated "CR" brass (f.i. Cim CA 1210H).

**Working temperature:** -20°C to 120°C

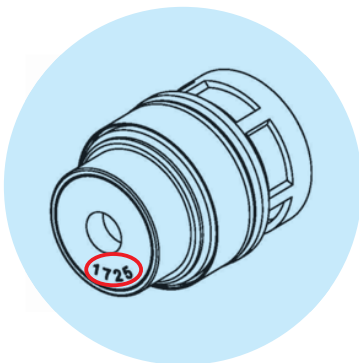
### CARTRIDGE FOR VALVES FROM DN 15 TO DN 25 (0,007 l/s ÷ 0,680 l/s)

cod. (max 350KPa)	cod. (max 600KPa)	Flow (l/s)	Flow (l/h)	Flow (gpm)	Min Δp (KPa)	Kv
Cim CA1150		0,007	25	0,11	7	0,09
Cim CA1170		0,01	35	0,15	7	0,14
Cim CA1190		0,012	46	0,20	7	0,16
Cim CA1210	Cim CA1210 H	0,015	55	0,24	7	0,21
Cim CA1230	Cim CA1230 H	0,021	75	0,33	8	0,27
Cim CA1260	Cim CA1260 H	0,023	84	0,37	9	0,28
Cim CA1290	Cim CA1290 H	0,029	104	0,46	10	0,33
Cim CA1300	Cim CA1300 H	0,032	114	0,50	10	0,36
Cim CA1320	Cim CA1320 H	0,036	129	0,57	11	0,39
Cim CA1350	Cim CA1350 H	0,043	154	0,68	11	0,46
Cim CA1370	Cim CA1370 H	0,049	175	0,77	12	0,51
Cim CA1400	Cim CA1400 H	0,057	204	0,90	12	0,59
Cim CA1430	Cim CA1430 H	0,067	241	1,06	12	0,70
Cim CA1460	Cim CA1460 H	0,078	279	1,23	12	0,81
Cim CA1490	Cim CA1490 H	0,089	320	1,41	13	0,89
Cim CA1510	Cim CA1510 H	0,097	350	1,54	13	0,97
Cim CA1540	Cim CA1540 H	0,111	400	1,76	13	1,11
Cim CA1570	Cim CA1570 H	0,132	477	2,10	14	1,27
Cim CA1620	Cim CA1620 H	0,151	545	2,40	14	1,46
Cim CA1725	Cim CA1725 H	0,171	615	2,71	14	1,64
Cim CA1730	Cim CA1730 H	0,186	670	2,95	14	1,79
Cim CA1735	Cim CA1735 H	0,204	736	3,24	14	1,97
Cim CA1740	Cim CA1740 H	0,222	799	3,52	16	2,00
Cim CA1745	Cim CA1745 H	0,242	870	3,83	19	2,00
Cim CA1750	Cim CA1750 H	0,260	936	4,12	21	2,01
Cim CA2070	Cim CA2070 H	0,283	1020	4,49	22	2,17
Cim CA2074	Cim CA2074 H	0,300	1081	4,76	22	2,30
Cim CA2077	Cim CA2077 H	0,332	1195	5,26	22	2,55
Cim CA2082	Cim CA2082 H	0,371	1335	5,88	23	2,78
Cim CA2086	Cim CA2086 H	0,412	1483	6,53	23	3,09
Cim CA2088	Cim CA2088 H	0,439	1581	6,96	23	3,30
Cim CA2092	Cim CA2092 H	0,493	1774	7,81	24	3,62
Cim CA2094	Cim CA2094 H	0,509	1833	8,07	24	3,74
Cim CA2099	Cim CA2099 H	0,578	2080	9,16	25	4,16
Cim CA2103	Cim CA2103 H	0,625	2251	9,91	26	4,41
Cim CA2106	Cim CA2106 H	0,644	2319	10,21	27	4,46
Cim CA2109	Cim CA2109 H	0,680	2448	10,78	28	4,63



**CARTRIDGE FOR VALVES FROM DN 25L TO DN 50 (0,187 l/s ÷ 3,154 l/s)**

cod. (max 350KPa)	cod. (max 600KPa)	Flow (l/s)	Flow (l/h)	Flow (gpm)	Min Δp (KPa)	Kv
Cim CA3073	Cim CA3073 H	0,187	674	2,97	12	1,95
Cim CA3082	Cim CA3082 H	0,239	861	3,79	12	2,49
Cim CA3089	Cim CA3089 H	0,283	1020	4,49	12	2,94
Cim CA3094	Cim CA3094 H	0,315	1136	5,00	12	3,28
Cim CA3096	Cim CA3096 H	0,331	1190	5,24	12	3,44
Cim CA3098	Cim CA3098 H	0,353	1272	5,60	13	3,53
Cim CA3102	Cim CA3102 H	0,375	1349	5,94	13	3,74
Cim CA3107	Cim CA3107 H	0,413	1485	6,54	13	4,12
Cim CA3111	Cim CA3111 H	0,435	1567	6,90	14	4,19
Cim CA3112	Cim CA3112 H	0,453	1631	7,18	14	4,36
Cim CA3118	Cim CA3118 H	0,504	1815	7,99	14	4,85
Cim CA3124	Cim CA3124 H	0,556	2001	8,81	15	5,17
Cim CA3125	Cim CA3125 H	0,568	2044	9,00	16	5,11
Cim CA3129	Cim CA3129 H	0,603	2171	9,56	16	5,43
Cim CA3132	Cim CA3132 H	0,631	2271	10,00	17	5,51
Cim CA3135	Cim CA3135 H	0,661	2380	10,48	17	5,77
Cim CA3138	Cim CA3138 H	0,694	2498	11,00	18	5,89
Cim CA3142	Cim CA3142 H	0,733	2639	11,62	18	6,22
Cim CA3148	Cim CA3148 H	0,797	2871	12,64	19	6,59
Cim CA3156	Cim CA3156 H	0,886	3191	14,05	21	6,96
Cim CA3161	Cim CA3161 H	0,946	3407	15,00	22	7,26
Cim CA3163	Cim CA3163 H	0,968	3486	15,35	22	7,43
Cim CA4148	Cim CA4148 H	1,009	3635	16,00	20	8,13
Cim CA4152	Cim CA4152 H	1,023	3681	16,00	21	8,03
Cim CA4156	Cim CA4156 H	1,136	4090	18,00	21	8,92
Cim CA4164	Cim CA4164 H	1,199	4315	19,00	21	9,42
Cim CA4168	Cim CA4168 H	1,262	4540	20,00	22	9,68
Cim CA4173	Cim CA4173 H	1,325	4770	21,00	22	10,17
Cim CA4176	Cim CA4176 H	1,388	4995	22,00	23	10,42
Cim CA4182	Cim CA4182 H	1,514	5450	24,00	24	11,12
Cim CA4191	Cim CA4191 H	1,640	5905	26,00	25	11,81
Cim CA4194	Cim CA4194 H	1,816	6539	29,00	26	12,82
Cim CA4200	Cim CA4200 H	1,893	6815	30,00	27	13,11
Cim CA4205	Cim CA4205 H	2,019	7265	32,00	28	13,73
Cim CA4211	Cim CA4211 H	2,145	7720	34,00	30	14,10
Cim CA4217	Cim CA4217 H	2,271	8175	36,00	31	14,68
Cim CA4222	Cim CA4222 H	2,397	8630	38,00	33	15,02
Cim CA4229	Cim CA4229 H	2,523	9085	40,00	34	15,58
Cim CA4235	Cim CA4235 H	2,650	9540	42,00	36	15,90
Cim CA4241	Cim CA4241 H	2,776	9990	44,00	38	16,21
Cim CA4248	Cim CA4248 H	2,902	10445	46,00	40	16,51
Cim CA4250	Cim CA4250 H	3,028	10900	48,00	42	16,82
Cim CA4262	Cim CA4262 H	3,154	11355	50,00	44	17,12



## Orifice plate marking

On the orifice plate is engraved a four digit code number, corresponding to the last four digits of Cimberio cartridge code.

Cartridges can be identified by above mentioned four digits numbers; the corresponding flow rate and minimum Δp can be read on specific tables.

cod. (max 350KPa)	cod. (max 600KPa)	Flow (l/s)	Flow (l/h)	Flow (gpm)	Min Δp (KPa)
Cim CA1620	Cim CA1620 H	0,151	545	2,40	14
Cim CA1725	Cim CA1725 H	0,171	615	2,71	14
Cim CA1730	Cim CA1730 H	0,186	670	2,95	14