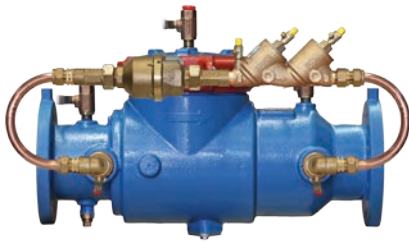


BACKFLOW PREVENTION CATALOGUE

Double Detector Check Valve Assembly

4AE-600 SERIES



Sizes 65mm - 250mm

*water meter is optional extra

DOUBLE DETECTOR CHECK VALVES

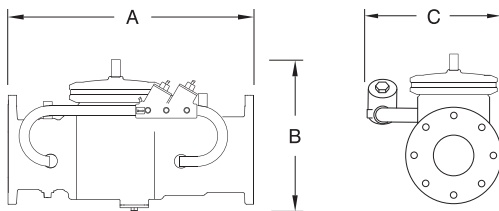
The Apollo Series 4AE-600 Double Detector Check Assembly is designed to prevent contamination of the potable water supply due to back-siphonage or backpressure from substances that are objectionable, but non-health hazards, and at the same time detect leakage or unauthorized use of water from fire hydrants or sprinkler systems. The mainline unit consists of two independent spring-loaded TriForce™ center stem guided check valves.

OPERATION

During no flow conditions, the mainline and by-pass check valves will remain closed. If there is a low flow demand (up to a minimum of 12 l/m) of water downstream, which may be caused by a system leak or unauthorized use, the flow is routed through the water meter to monitor such consumption. Higher flow will tend to open the mainline check valves at which point water continues to flow at the by-pass at a rate below capacity. In the event pressure increases downstream, tending to reverse direction of flow, both check valves in the mainline and by-pass are closed to prevent backflow.

FEATURES

- Medium hazard protection against back-pressure/back-siphonage
- Easy maintenance - no special tools required
- Snap-in check retainers; 65-150mm
- Bolted-in checks: 200 - 250mm
- Low head loss
- Stem guided TriForce™ check valves
- Table 'E' Flanges
- Corrosion resistant
- Maximum working pressure 1,200kPa
- Horizontal or vertical installation
- Operating temp. range 1°C - 60°C
- AS2845.1 approved
- Designed, manufactured, assembled and tested in South Carolina, USA
- 2 year, domestic warranty

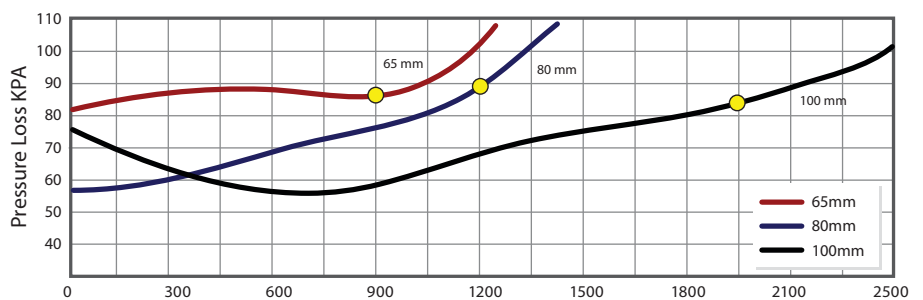


DIMENSIONS

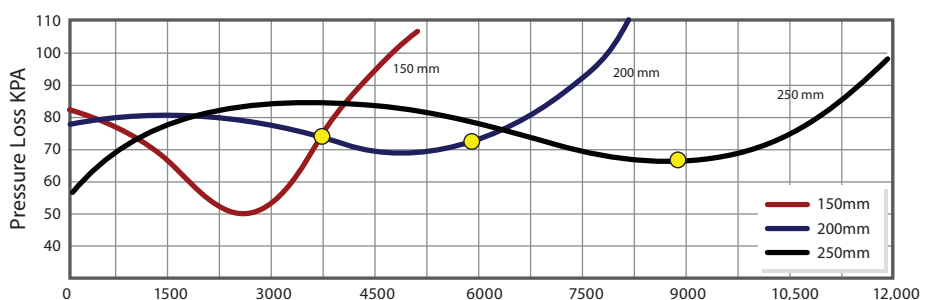
Valve Code Size	4AE69E 65mm	4AE60E 80mm	4AE6AE 100mm	4AE6CE 150mm	4AE6EE 200mm	4AE6GE 250mm
A (DDCV device length)	550	550	623	877	957	1126
B (Height)	399	423	501	671	818	968
Width of assembly	434	434	520	630	680	740
WEIGHTS	kg.	kg.	kg.	kg.	kg.	kg.
Net Wt. (Device Only)	45	47	67	163	258	383

MATERIALS

Part	Material
Body and covers	Epoxy Coated DI
Springs	Stainless Steel
Seats	Bronze (C84400)
C.V. Discs	EPDM
Fasteners	Stainless Steel
Test Cock Handles	Stainless Steel



Flow Rate l/m



Flow Rate l/m

