

# SINGLE JET HOT WATER METER

15MM





AS3565.1  
WM 74862

NMI APPROVED  
14/3/55

## 15MM HOT WATER METER WITH PULSE OUTPUT

### FUNCTION AND FEATURES

#### ■ Compact Size

Compact size of 110mm face to face between meter threads (185mm with couplings).

#### ■ Upside down installation (GSD8)

The GSD8 model features an improved mechanism allowing installation upside down.

#### ■ Pulse output

REED pulse output cable included providing 1 pulse / 10L (GSD5) or 1 pulse / 1L (GSD8)

#### ■ 360° rotating dial

Sealed dry register with 360° rotation provides ease of reading.

#### ■ Scannable Barcode

Serial number provided in both a number and barcode format for ease of asset management.

#### ■ Couplings included

The meters include meter coupling tails with integrated check valve as standard.

## PRODUCT SPECIFICATIONS

The Watermarked GSD5 and GSD8 are available in a 15mm compact single jet water meter suitable for hot water. It features a dry dial with direct reading on 5 numerical rolls and 4 indicator dials on the GSD5 or 8 numerical rolls on the GSD8. The meters are supplied with a pulse output cable as standard.

The meters are all supplied with a serial number as well as a scannable barcode for ease of asset management.

The meters are supplied with meter couplings with a non-return valve integrated into the outlet coupling. An optional dual check valve may be supplied separately which is installed on the outlet of the meter.

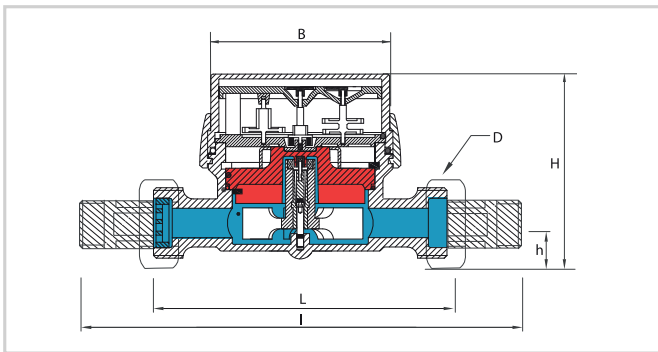
The GSD series are made in Italy by B Meters; it is a quality, cost effective water meter, with a long life expectancy. The GSD series are suitable for indoor use only.

The GSD8 model features an improved reading mechanism for low friction operation, resulting in the ability to install it upside down whilst remaining compliant with its R50 accuracy ratio.

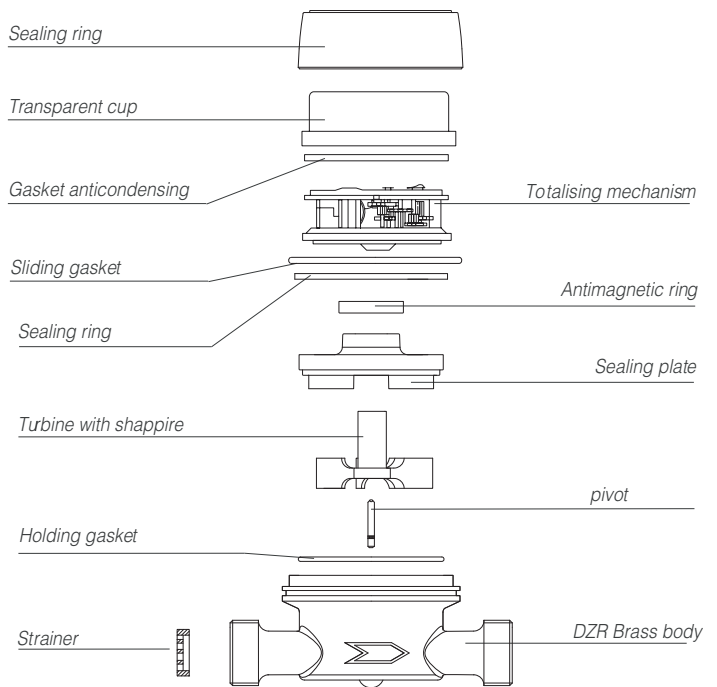
Note that other sizes of hot water meters are also available, however, are not Watermark approved. See separate brochure.



## DIAGRAM



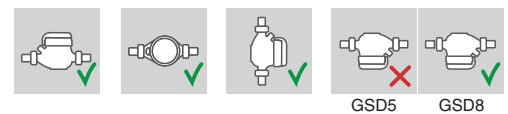
SIZE	DN15	CODE	DESCRIPTION
L	110mm	GSD5-R-15H	GSD5 series 15mm single jet hot water meter with check valve and couplings, direct reading on 5 numerical rolls and 4 indicator dials. Fitted with REED pulse output for 1 pulse per 10L.
I	190mm		
H	73mm		
h	18mm		
B	85mm	GSD8-R-15H	GSD8 series 15mm single jet hot water meter with check valve and couplings, direct reading on 8 numerical rolls. Fitted with REED pulse output for 1 pulse per 1L.
D	3/4"		
WEIGHT	0.65 kg		



## SPECIFICATIONS

	horizontal face up	side / vertical (GSD5) upside down (GSD8)
MINIMUM FLOWRATE Q1 (M3/H)	0.025	0.050
TRANSITIONAL FLOWRATE Q2 (M3/H)	0.040	0.080
MAX CONTINUOUS FLOWRATE Q3 (M3/H)	2.5	2.5
OVERLOAD FLOWRATE Q4 (M3/H)	3.125	3.125
RATIO Q3/Q1	100	50
TEMPERATURE RANGE (HOT)	30 - 90 °C	
MAX ADMISSIBLE PRESSURE	1600 kPa	

## INSTALLATION POSITION



## DUAL CHECK VALVE

The optional AS/NZS 2845.1 approved dual check valve is supplied as a separate product and is installed on the outlet of the water meter.

The water meter with dual check valve is also listed on the Watermark schedule.



**NMI APPROVED**  
**14/3/55**



**All Valve**  
INDUSTRIES

160221-00